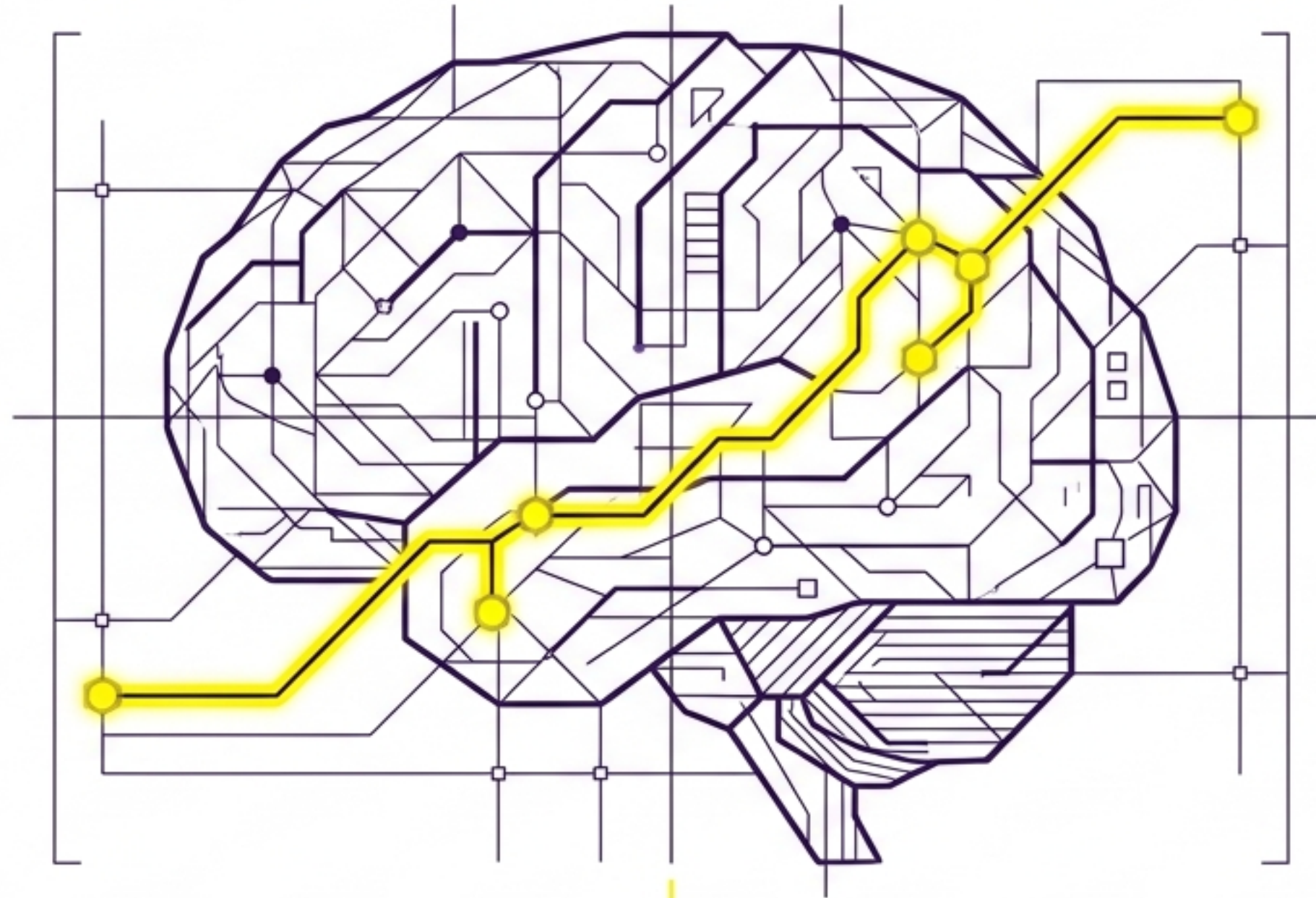


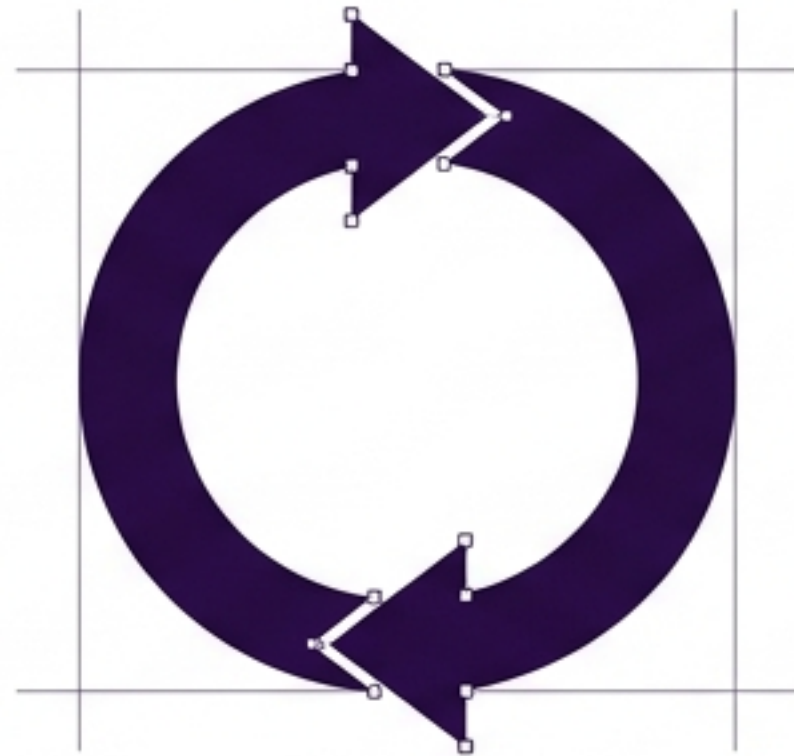
# What Is a Superconscious Rapid Recode?

The applied neuroscience of structural brain change and subconscious reprogramming.



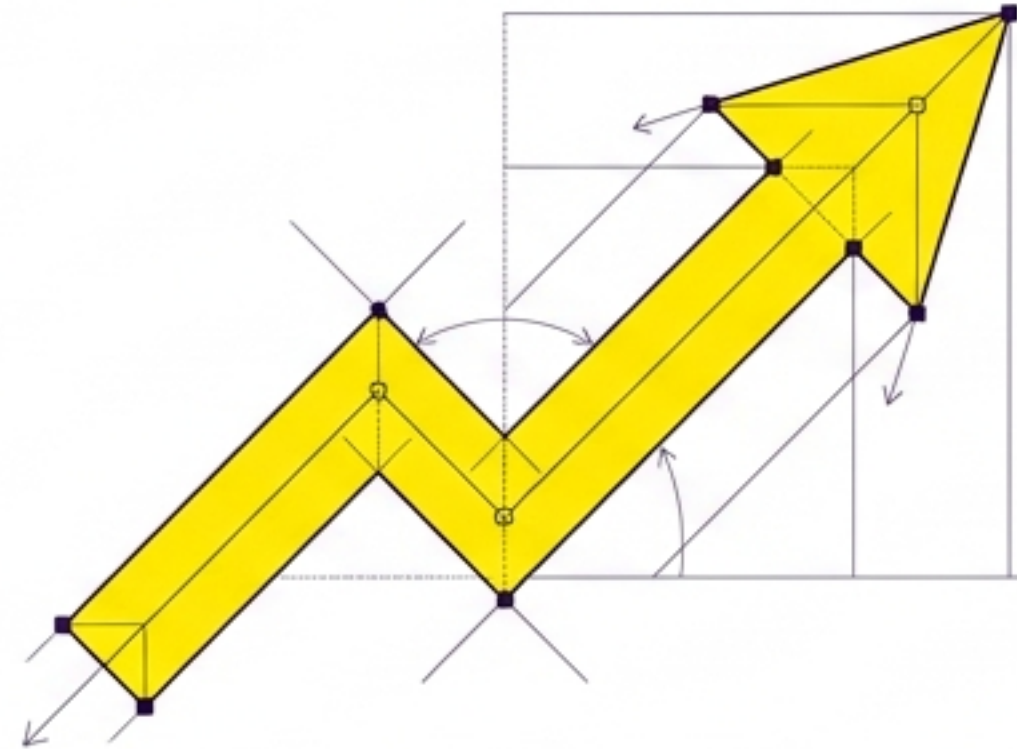
Practical Takeaway: A Rapid Recode is not magic; it is applied neuroscience. Prepare to learn the exact mechanics of structural brain change.

# The Paradigm Shift: You Are Programmed, Not Broken



**Problem-Solving Model**

- Focuses on treating symptoms.
- Analyzes and relives past trauma.
- Relies on conscious willpower to fix subconscious software.



**Creation Model**

- Focuses on architecting desired futures.
- Builds new subconscious pathways.
- Directs focus from what is broken to what is chosen.

**Practical Takeaway:** Stop asking “What do I need to fix?” and start asking “What do I **choose to create?**”

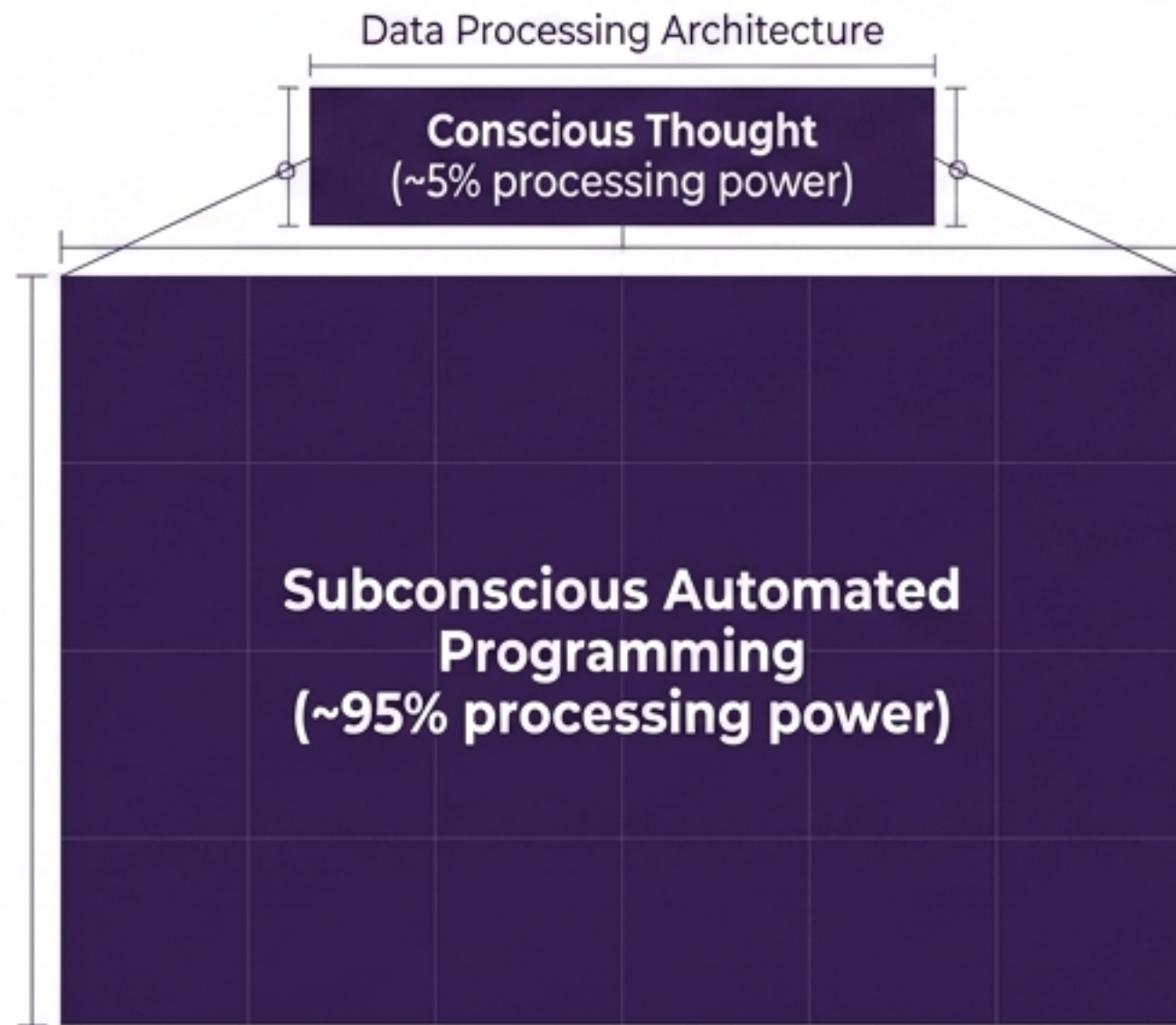
# The Genesis of the Magnetic Mind Method

---



**Practical Takeaway: True resilience is built by shifting focus from managing grief and stress to actively designing your next reality.**

# The Neuroscience of Reprogramming

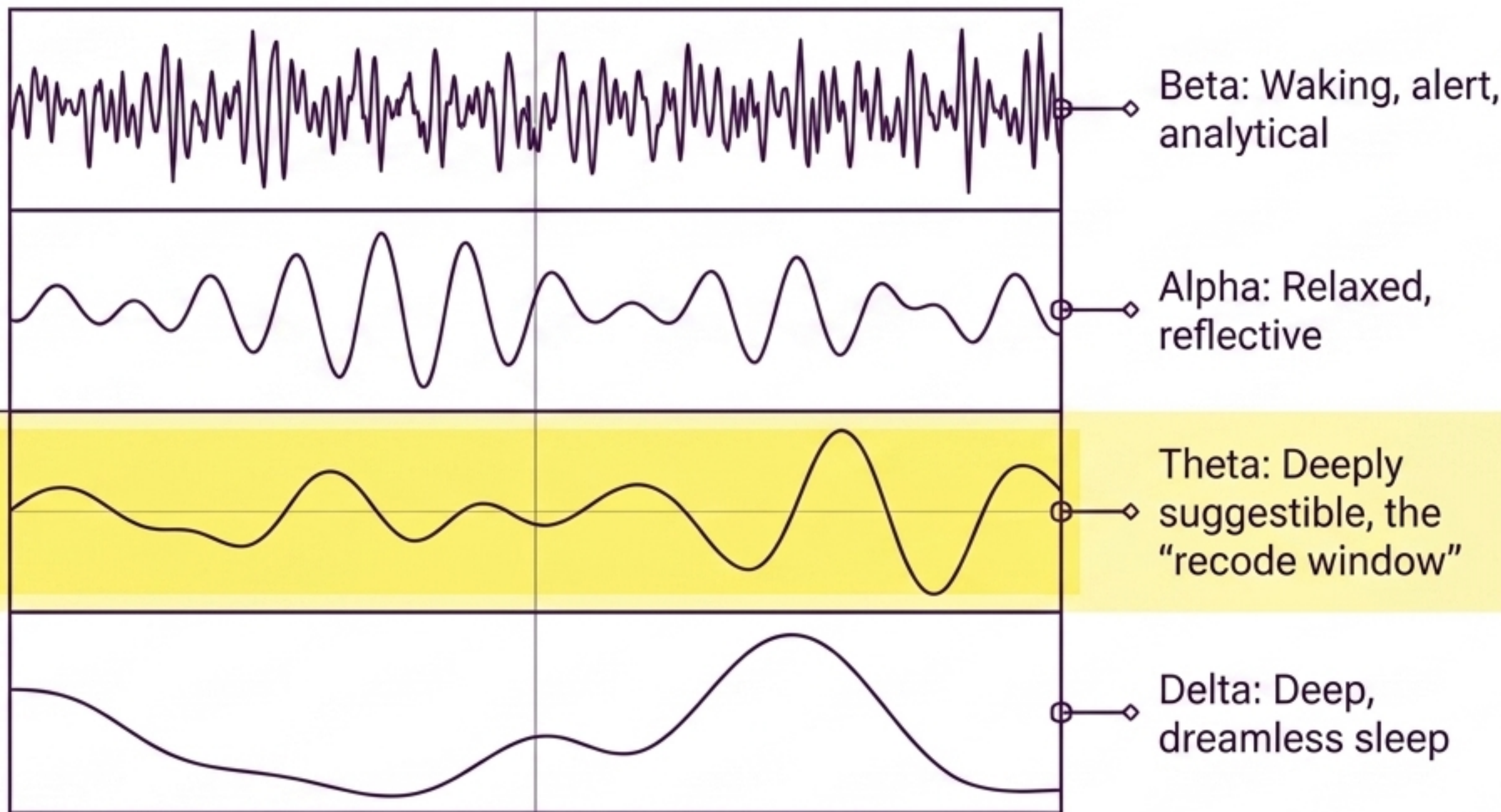


- **Neuroplasticity:** The brain's biological ability to reorganize and rewire itself.
- **Hebb's Law:** Neurons that fire together, wire together.
- **The 95% Rule:** Your subconscious mind dictates the vast majority of automated decisions.

**Practical Takeaway:** Willpower fails because it only utilizes 5% of your brain's processing power. You must rewire the other 95%.

# The Theta Window (4-8 Hz)

From ages 0-7, human brains operate in a constant Theta state, absorbing environmental programming without an analytical filter. A Rapid Recode intentionally accesses this biological state in adults to bypass the conscious gatekeeper.



Practical Takeaway: The 10 minutes before you fall asleep and after you wake up are naturally Theta-dominant. Use them to mentally rehearse goals, not worry.

# Anatomy of a 60-Minute Session

## Phase 1: Assessment (Logic)



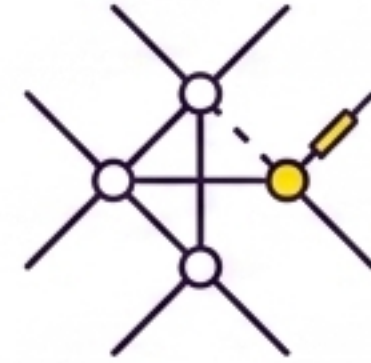
- Mapping the true choice vs. current resistance.
- Zero requirement to prepare or analyze.

## Phase 2: Theta Access (Relaxation)



- Fully guided process.
- Entering a highly suggestible brainwave state.

## Phase 3: Cognitive Reframing (Rewiring)



- Executing precise pattern interrupts.
- Dismantling old circuits.
- Zero requirement to relive past trauma.

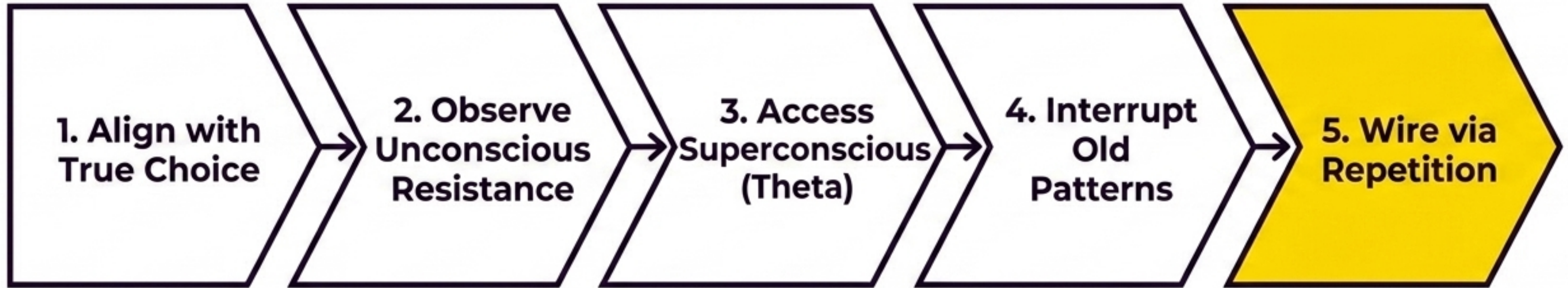
**Practical Takeaway:** You do not need to consciously understand where a block came from in order to neurologically dismantle it.

# Traditional Therapy vs. Rapid Recode

	<b>Traditional Therapy</b>	<b>Rapid Recode</b> 
<b>Orientation</b>	Past & Problem-focused	✓ Future & Creation-focused
<b>Primary Mechanism</b>	Conscious Talk, Logic, Willpower	✓ Theta State & Neuroplasticity
<b>Trauma Approach</b>	Reliving, Processing, Analyzing	✓ Pattern Interruption without reliving

**Practical Takeaway:** Use traditional therapy to understand your past; use **Superconscious Recoding** to architect your future.

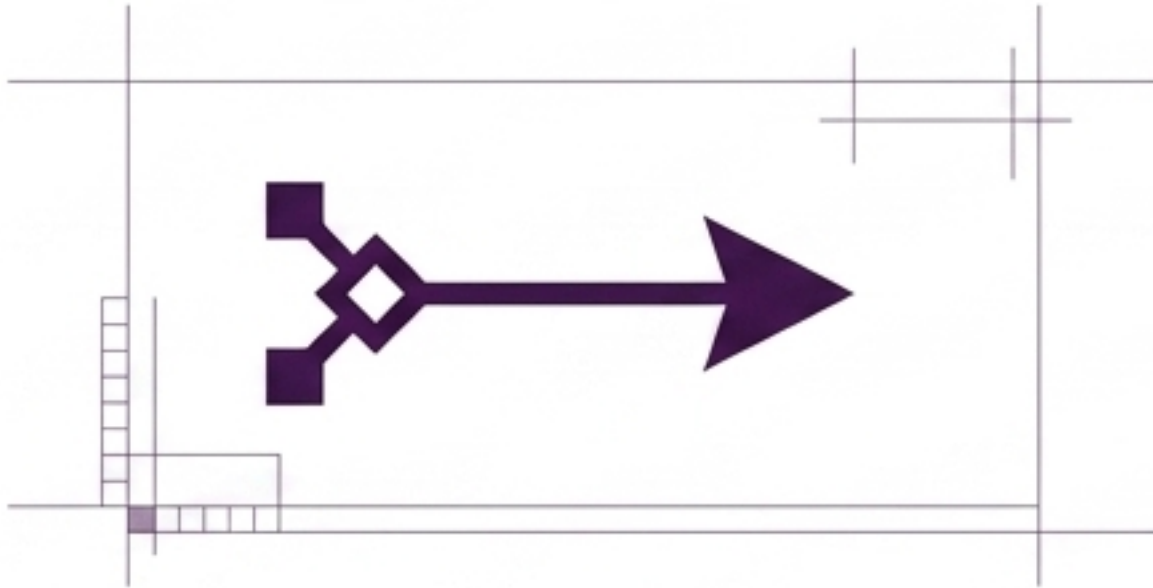
# The 5-Step Rapid Recode Framework



Structural change requires the complete sequence. Skipping steps relies on temporary motivation rather than permanent biological change.

**Practical Takeaway:** To change a deeply held limitation, you must address both the conscious destination and the subconscious resistance simultaneously.

# Steps 1 & 2: Alignment & Awareness



## Step 1: The True Choice

- Set the GPS.
- Choose a definitive outcome without justifying *\*why\** you want it.



## Step 2: Awareness of Resistance

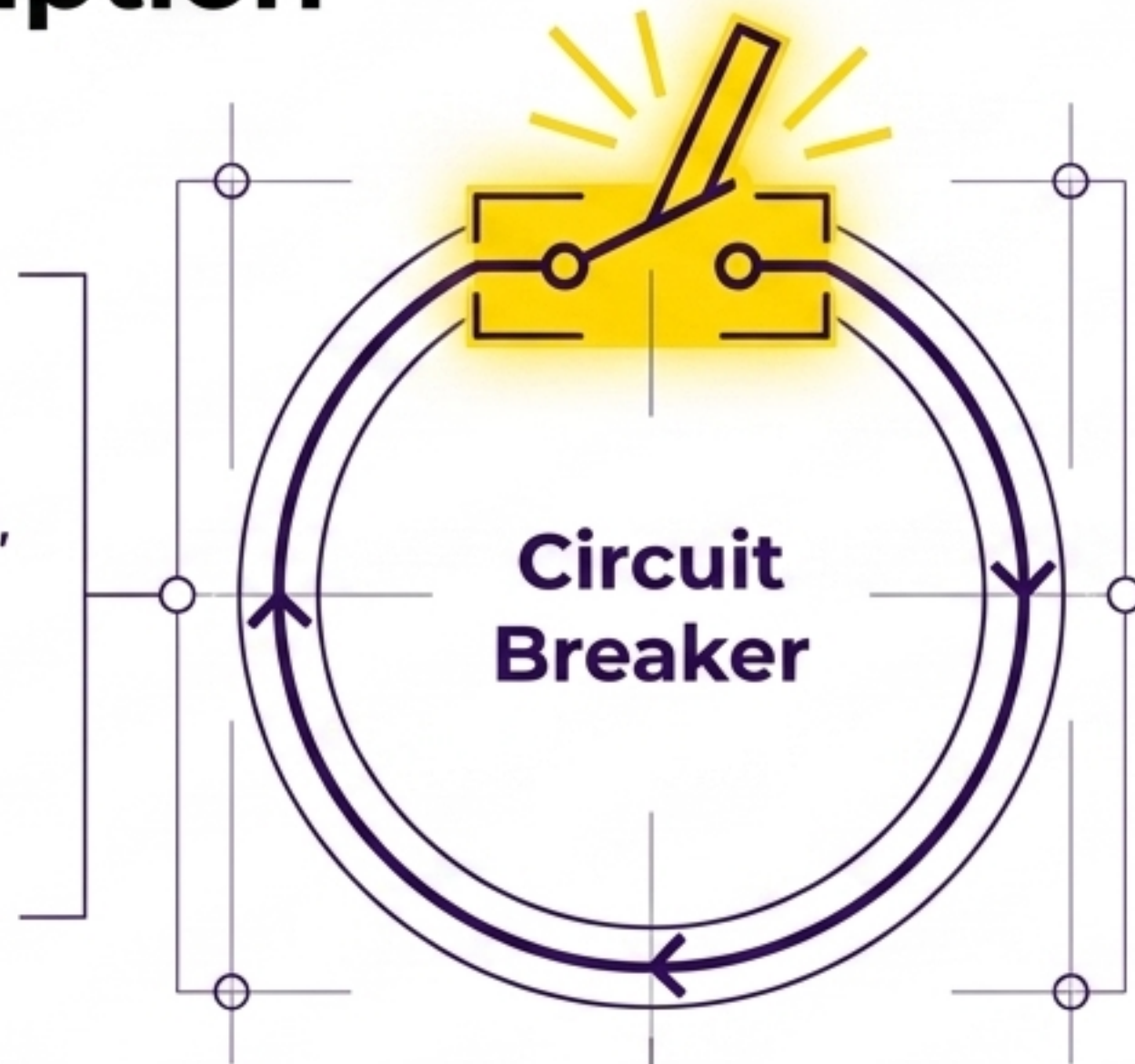
- Spot the autopilot.
- Bring conscious awareness to the hidden beliefs and secondary gains trying to steer you off course.

**Practical Takeaway:** Define your goal without justifying it. Simply state: "I choose to experience [X]."

# Steps 3 & 4: Theta Access & Pattern Interruption

## Step 3: Theta Access

- Dropping the analytical guard by entering a guided, relaxed brainwave state.



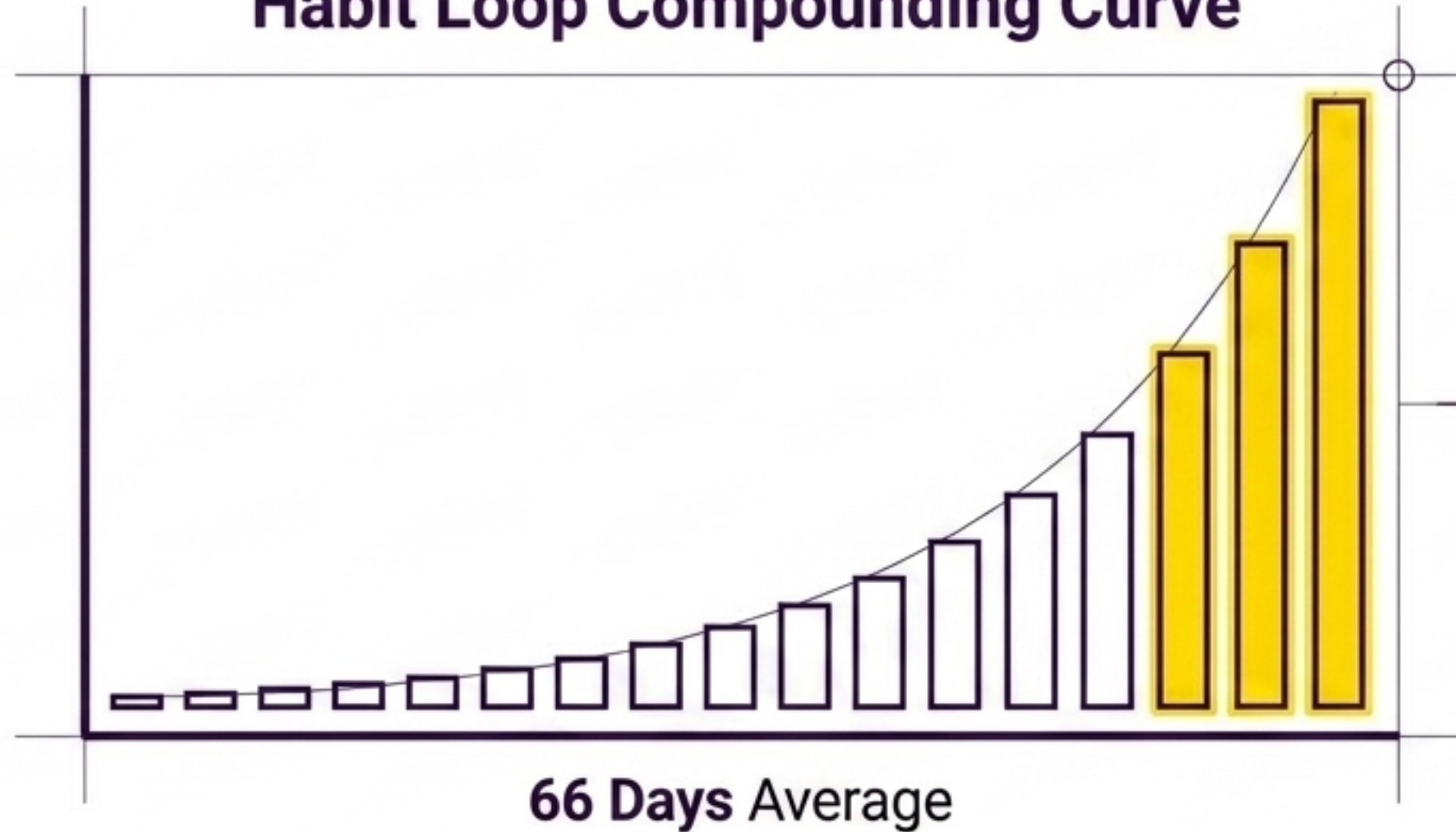
## Step 4: Pattern Interruption

- Deploying a physical or cognitive cue (a sound, physical movement, or specific reframe).
- Stops the old neural pathway mid-fire.

**Practical Takeaway:** When a negative loop starts, physically interrupt it. Clap your hands, stand up, or say 'Cancel.' Break the autopilot.

# Step 5: Repetition & Inspired Action

## Habit Loop Compounding Curve



- It takes an average of **66 days** to fully automate a new neural pathway.
- Unused old pathways undergo '**synaptic pruning**' (weakening from lack of use).
- Action in the physical world provides evidence that **validates the new subconscious programming**.

**Practical Takeaway:** Massive action in the wrong direction creates burnout. Small, inspired actions taken from a rewired state create momentum.

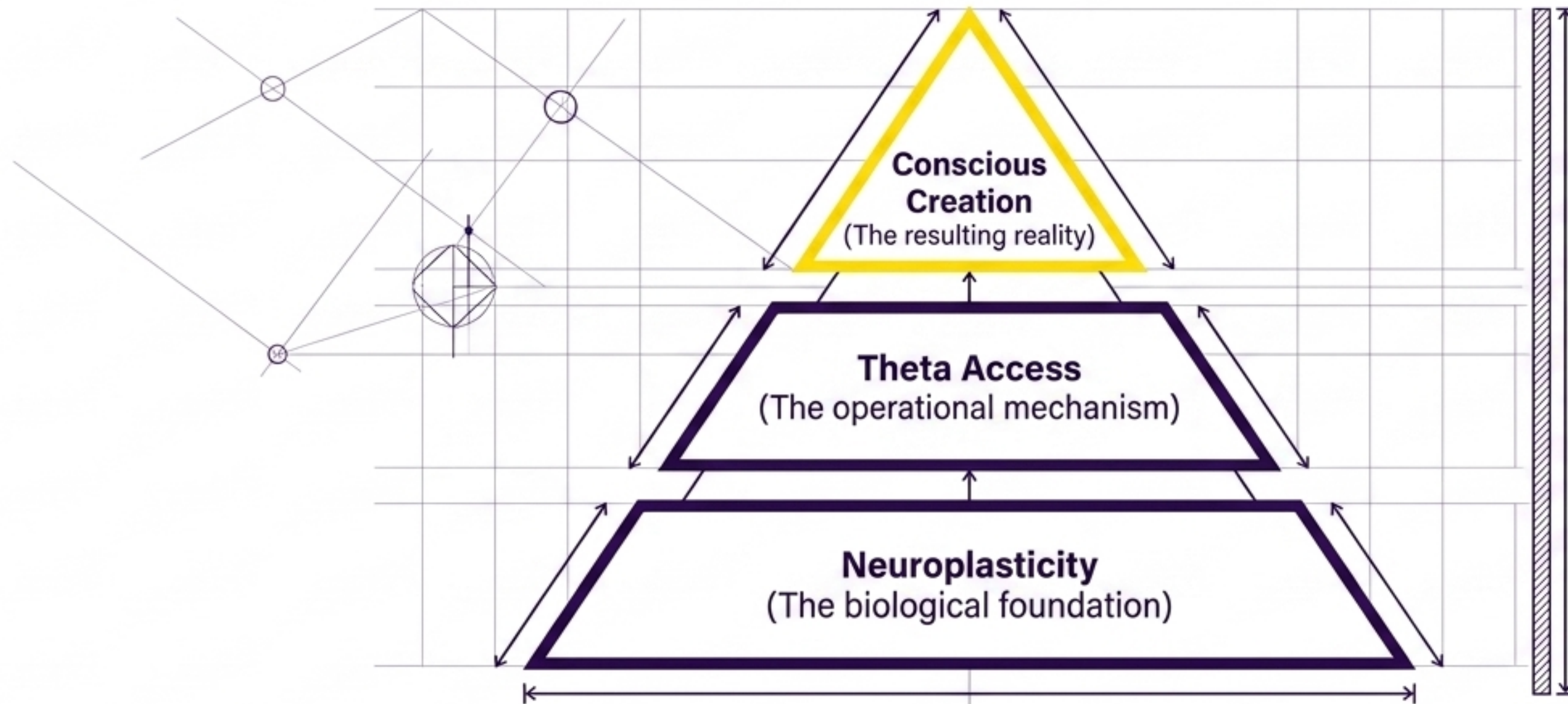
# Who Does This Help?



Recoding removes resistance. It applies whenever your input (**effort**) **does not match your output** (results).

**Practical Takeaway:** Identify the single area of your life where you feel you are working the hardest with the least progress. That is your primary target for Recoding.

# The Architecture of Lasting Change



- The personal development industry breaks when it uses conscious effort to solve subconscious programming.

- The Rapid Recode method updates the software directly at the source.

**Practical Takeaway:**  
You are exactly one neurological shift away from changing your default reality.

# Next Steps: Integration & Execution



## 1. Audit

Identify your daily triggers and the default automated responses that follow.



## 2. Interrupt

Implement one physical pattern interrupt today when you catch a negative loop.



## 3. Execute

Book a professional, 60-minute Recode session to target deep-seated, 95% subconscious blocks.

**Practical Takeaway:** Tonight, spend 5 minutes before sleep vividly imagining your desired outcome to leverage your brain's natural Theta state.